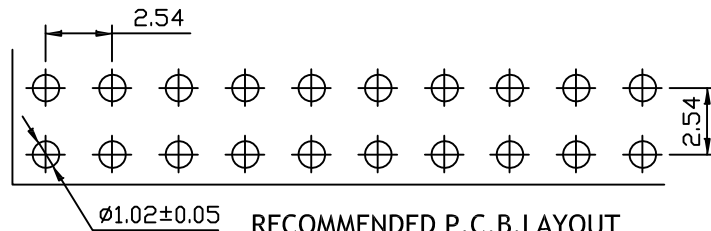
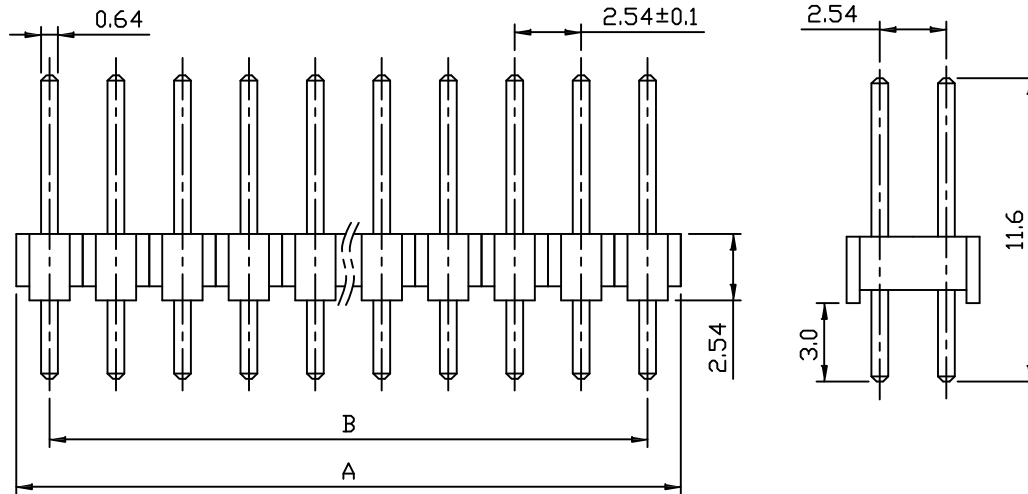
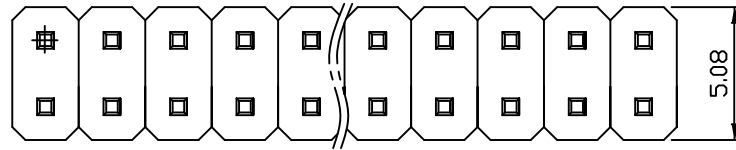


RoHS COMPLIANT



RECOMMENDED P.C.B. LAYOUT  
ALL TOLERANCES ARE ±0.05

Specifications

Current Rating: 3Amp

Voltage Rating: 250V AC

Insulation Resistance: 1000MΩ Min.

Dielectric Withstanding: 600VAC

Contact Resistance: 20mΩ Max.

Operating Temperature: -40°C to +105°C

Materials

Contact Material: Brass

Plating: Gold Flash or Contact Selective Gold

Insulator Material: Polyester, UL 94V-0 PBT

Part number Information:

A254 6 WV -2\*xxP

Pitch 2.54mm

PINS

Series No.

WV: Vertical 180°

WR: Right Angel 90°

(01-99)

PINS	DIMENSION(mm)		PINS	DIMENSION(mm)	
	A	B		A	B
1	2.54		11	27.94	25.40
2	5.08	2.54	12	30.48	27.94
3	7.62	5.08	13	33.02	30.48
4	10.16	7.62	14	35.56	33.02
5	12.70	10.16	15	38.10	35.56
6	15.24	12.70	16	40.64	38.10
7	17.78	15.24	17	43.18	40.64
8	20.32	17.78	18	45.72	43.18
9	22.86	20.32	19	48.26	45.72
10	25.40	22.86	20	50.80	48.26

						Angle	±2°	DESIGN	Aple	2015.02.29	<p>龍威電子有限公司 Dragon Well Ele Dragon Well Electronics Co.,Ltd</p>	
						X.	±0.30	CHECK	Jason	2015.02.29		
						X.X	±0.20	APPROVAL	Rix	2015.02.29		
ECN NO.	REV	DATE	DESCRIPTION	CHANGE	APPRO.	GENERAL TOLERANCE UNLESS OTHERWISE NOTED		SCALE: N/A	UNIT: mm	A4	SHEET: 1 of 1	TITLE: 2.54 PIN HEADER DUAL ROW DIP TYPE BASE 2.54H
	A-0	2015.02.29	NEW	Aple	Rix	X.XX	±0.10					MODEL NO. A2546WV-2*xxP
												THIS DRAWING CONTAINS INFORMATION THAT IS PROPRIETARY TO DRAGON WELL AND SHOULD NOT BE USED WITHOUT WRITTEN PERMISSION