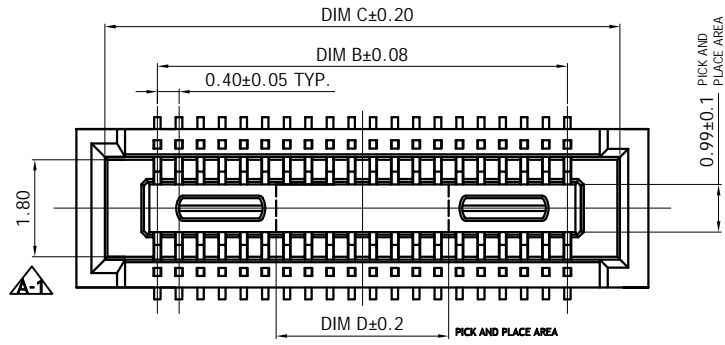
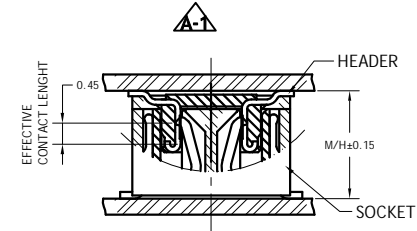
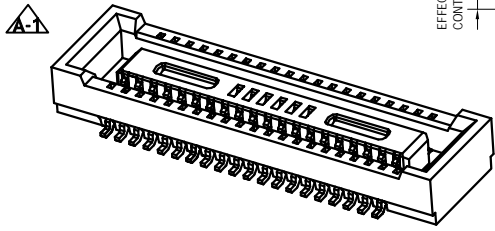


RoHS COMPLIANT

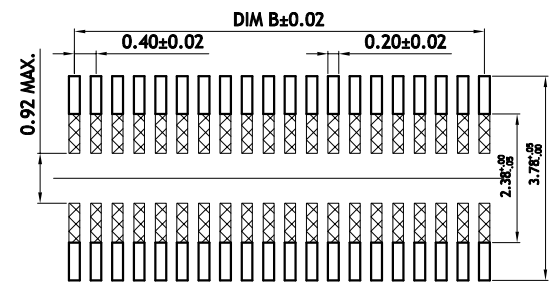
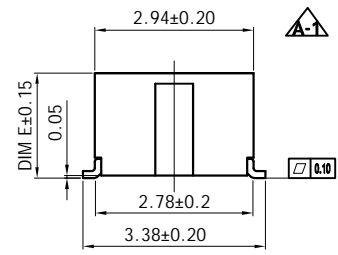
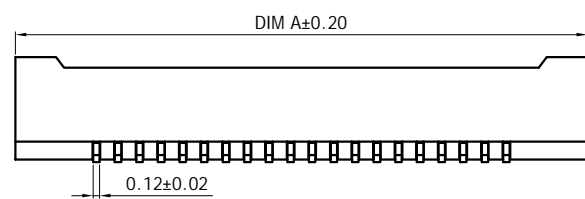


0.99 ±0.1 PICK AND PLACE AREA



PIN NO.	DIM A	DIM B	DIM C	DIM D
10	4.60	1.60	3.55	1.00
20	6.60	3.60	5.55	1.00
24	7.40	4.40	6.35	1.20
30	8.60	5.60	7.55	1.50
34	9.40	6.40	8.35	1.50
40	10.60	7.60	9.55	3.20
50	12.60	9.60	11.55	3.20
60	14.60	11.60	13.55	3.20
70	16.60	13.60	15.55	3.20
80	18.60	15.60	17.55	3.20
90	20.60	17.60	19.55	3.20
100	22.60	19.60	21.55	3.20
120	26.60	23.60	25.55	3.20

SPECIFICATIONS:
 1. VOLTAGE/CURRENT RATING: 30V/AC, DC, 0.3A;
 2. WITHSTANDING VOLTAGE: 100V AC/ONE MINUTE;
 3. INSULATION RESISTANCE: 50MΩ MIN/100V DC.;
 4. CONTACT RESISTANCE: 90mΩ MAX./1mA, 20mV AC, 1KHz;
 5. DURABILITY: 30 CYCLES;
 6. OPERATING TEMPERATURE RANGE: -35°C TO 85°C.
MATERIAL:
 1. INSULATOR: LCP UL 94V-0 BLACK;
 2. TERMINAL: PHOSPHOR BRONZE;
PLATING:
 1. TERMINAL: CONTACT AREA: GOLD 0.05μm*MIN.
 SMT LEAD: GOLD 0.025μm* MIN.
 UNDERPLATING: NICKEL 1μm* MIN.

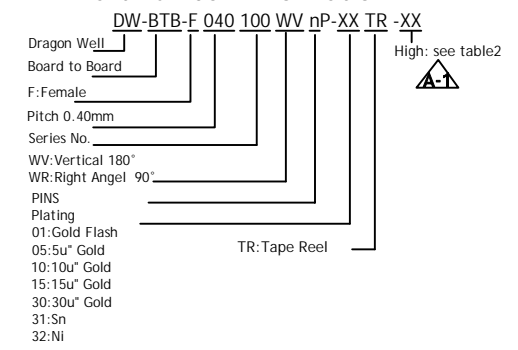


RECOMMENDED P.C.B. LAYOUT
 ALL TOLERANCES ARE ±0.05

Table 2

	01	02	03	04	05
M/H	2.00	2.50	3.00	3.50	4.00
DIM E	1.95	2.40	2.90	3.40	3.90

Part number Information:



ECN NO.	REV	DATE	DESCRIPTION	CHANGE	APPRO.	GENERAL TOLERANCE UNLESS OTHERWISE NOTED	SCALE: N/A	UNIT:mm	A4	SHEET: 1 of 1
						Angle ±2°	DESIGN	Aple	2025.08.19	
						X. ±0.30	CHECK	Jason	2025.08.19	
	A-1	2025.08.19	Updated spec	Aple	Rix	X.X ±0.15	APPROVAL	Rix	2025.08.19	
	A-0	2015.03.15	NEW	Aple	Rix	X.XX ±0.10				

龍威電子有限公司
 Dragon Well Ele Dragon Well Electronics Co.,Ltd
 TITLE: 0.4 Pitch BTB SOCKET
 MODEL NO. DW-BTB-F040100WVnP-XXTR-XX
 THIS DRAWING CONTAINS INFORMATION THAT IS PROPRIETARY TO DRAGON WELL AND SHOULD NOT BE USED WITHOUT WRITTEN PERMISSION